

POWERMATIC® PRIDE
SAVING S EVENT

PRICES EFFECTIVE JANUARY 1, 2009 TO APRIL 30, 2009



Powermatic Sign Giveaway | Free Accessories
Price Reductions On All Products | Save Even More with Rebates



PM2000-1792000K
10" CABINET SAW

YOU SAVE
\$552⁰¹

SEE PAGE 3

POWER YOUR PRIDE WITH INSTANT ACCESSORIES



PRIDE SAVINGS EVENT

2

2009 POWERMATIC

FREE! MOBILE BASES

SEE INSIDE FOR DETAILS



FREE! LATHE BED EXTENSION

\$513 VALUE! (6294727B)



FREE! 4-PIECE CHISEL SET

\$210 VALUE! (1791096)



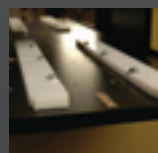
FREE! TABLE SAW ZERO CLEARANCE INSERT

\$66 VALUE! (1791786)



FREE! BANDSAW RISER BLOCK

\$127 VALUE! (1791217)



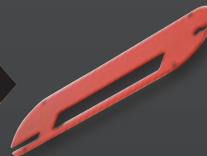
FREE! MOLDING GUIDE SYSTEM

\$338 VALUE! (2253082)



FREE! PLANER DIGITAL READOUT

\$200 VALUE! (708520)



FREE! TABLE SAW DADO INSERT

\$66 VALUE! (1791788)



LOOK FOR MORE SAVINGS WITH MAIL-IN REBATES, UP TO \$100!

PROGRAM DETAILS

Free accessories and Powermatic sign will be available through your dealer or shipped direct with your order. For cash rebates, forms can be found on-line at POWERMATIC.COM or from your certified Powermatic dealer.

FREE! 34" x 14" LIMITED EDITION POWERMATIC® METAL SIGN WITH THE PURCHASE OF QUALIFYING PRODUCTS.



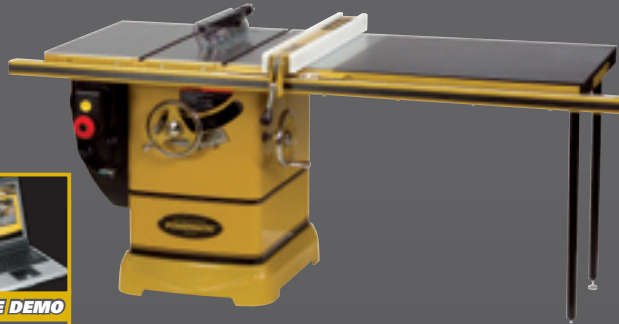
1792000K

\$2,699⁹⁹

YOU SAVE \$552⁰¹

PM2000 10" CABINET SAW

- Riving knife quick release
- Built-in retractable caster system (patent pending)
- Superb dust collection
- Arbor lock for quick blade change



FREE!



POWERMATIC SIGN, ZERO CLEARANCE INSERT AND A DADO INSERT

A \$192 VALUE

STOCK NO.	DESCRIPTION	PROMO ITEMS	LIST PRICE	SALE PRICE	YOU SAVE!
1792000K	PM2000 10" Cabinet saw, 3HP, 1Ph, 230V, 50", Accu-Fence®, Table & Legs	Powermatic Sign (900768), Zero Clearance Insert (1791786), Dado Insert (1791788)	\$3,252.00	\$2,699.99	\$552.01
1792001K	PM2000 10" Cabinet saw, 3HP, 1Ph, 230V, 50", Accu-Fence®, Table & Legs, Rout-R-Lift System	Powermatic Sign (900768), Zero Clearance Insert (1791786), Dado Insert (1791788)	\$3,559.00	\$2,999.99	\$559.01
1792002K	PM2000 10" Cabinet saw, 3HP, 1Ph, 230V, 30", Accu-Fence®, Table	Powermatic Sign (900768), Zero Clearance Insert (1791786), Dado Insert (1791788)	\$3,126.00	\$2,599.99	\$526.01
1792003K	PM2000 10" Cabinet saw, 3HP, 1Ph, 230V, 30", Accu-Fence®, Table, Rout-R-Lift System	Powermatic Sign (900768), Zero Clearance Insert (1791786), Dado Insert (1791788)	\$3,428.00	\$2,899.99	\$528.01
1792005K	PM2000 10" Cabinet saw, 5HP, 3Ph, 230/460V, 50", Accu-Fence®, Table & Legs	Powermatic Sign (900768), Zero Clearance Insert (1791786), Dado Insert (1791788)	\$3,252.00	\$2,699.99	\$552.01
1792006K	PM2000 10" Cabinet saw, 5HP, 3Ph, 230/460V, 50", Accu-Fence®, Table & Legs Rout-R-Lift System	Powermatic Sign (900768), Zero Clearance Insert (1791786), Dado Insert (1791788)	\$3,559.00	\$2,999.99	\$559.01
1792007K	PM2000 10" Cabinet saw, 5HP, 3Ph, 230/460V, 30", Accu-Fence®, Table	Powermatic Sign (900768), Zero Clearance Insert (1791786), Dado Insert (1791788)	\$3,126.00	\$2,599.99	\$526.01
1792008K	PM2000 10" Cabinet saw, 5HP, 3Ph, 230/460V, 30", Accu-Fence®, Table, Rout-R-Lift System	Powermatic Sign (900768), Zero Clearance Insert (1791786), Dado Insert (1791788)	\$3,428.00	\$2,899.99	\$528.01
1792010K	PM2000 10" Cabinet saw, 5HP, 1Ph, 230V, 50" Accu-Fence®, Table & Legs	Powermatic Sign (900768), Zero Clearance Insert (1791786), Dado Insert (1791788)	\$3,745.00	\$3,099.99	\$645.01
1792011K	PM2000 10" Cabinet saw, 5HP, 1Ph, 230V, 50", Accu-Fence®, Table & Legs, Rout-R-Lift System	Powermatic Sign (900768), Zero Clearance Insert (1791786), Dado Insert (1791788)	\$4,200.00	\$3,599.99	\$600.01
1792012K	PM2000 10" Cabinet saw, 5HP, 1Ph, 230V, 30", Accu-Fence®, Table	Powermatic Sign (900768), Zero Clearance Insert (1791786), Dado Insert (1791788)	\$3,745.00	\$3,099.99	\$645.01
1792013K	PM2000 10" Cabinet saw, 5HP, 1Ph, 230V, 30", Accu-Fence®, Table, Rout-R-Lift System	Powermatic Sign (900768), Zero Clearance Insert (1791786), Dado Insert (1791788)	\$4,037.00	\$3,499.99	\$537.01
1792016K	PM2000 10" Cabinet saw, 3HP, 1Ph, 230V, 50", Accu-Fence®, Workbench	Powermatic Sign (900768), Zero Clearance Insert (1791786), Dado Insert (1791788)	\$3,624.00	\$2,999.99	\$624.01
1792017K	PM2000 10" Cabinet saw, 5HP, 1Ph, 230V, 50", Accu-Fence®, Workbench	Powermatic Sign (900768), Zero Clearance Insert (1791786), Dado Insert (1791788)	\$4,188.00	\$3,499.99	\$688.01
1792018K	PM2000 10" Cabinet saw, 5HP, 3Ph, 230/460V, 50" Accu-Fence®, Workbench	Powermatic Sign (900768), Zero Clearance Insert (1791786), Dado Insert (1791788)	\$3,624.00	\$2,999.99	\$624.01



FREE!



MOBILE BASE AND A \$50.00 MAIL IN REBATE

UP TO A \$427 VALUE

64A 10" TABLE SAW

- Precision ground cast iron table has a beveled edge to help eliminate damage to work material
- Exclusive 3VX belt drive is more efficient with less vibration
- Accu-Fence® with 30" or 50" to the right cutting capacity ensures accuracy
- T-slot miter gauge with stops permits wider cross cutting

1791227K

\$999⁹⁹

YOU SAVE \$298⁰¹



FREE!



POWERMATIC SIGN AND AN 18" BED EXTENSION

UP TO A \$573 VALUE

MODEL 3520B WOOD LATHE

1352001

\$3,399⁹⁹

YOU SAVE \$814⁰¹

- Sliding headstock with electronic variable speed and digital RPM readout
- Two-position mount for the optional bed extension
- 2HP, 1PH or 3PH, 230V

STOCK NO.	DESCRIPTION	PROMO ITEMS	LIST PRICE	SALE PRICE	YOU SAVE!
1791227K	64A Tablesaw, 1-1/2 HP, 1 Ph, 115/230V, 30" Accu-Fence System	Mobile Base (2042370)	\$1,298.00	\$999.99	\$298.01
1791228K	64A Tablesaw, 1-1/2 HP, 1 Ph, 115/230V, 50" Accu-Fence System	Mobile Base (2042367)	\$1,393.00	\$1,099.99	\$293.01

STOCK NO.	DESCRIPTION	PROMO ITEMS	LIST PRICE	SALE PRICE	YOU SAVE!
1352001	Model 3520B, 2HP, Will Operate 1Ph or 3Ph, 230V	Powermatic Sign (900768), 18" Bed Extension (6294727B)	\$4,214.00	\$3,399.99	\$814.01



For More Information Go To Powermatic.com

PRIDE SAVINGS EVENT

4

2009 POWERMATIC



15S AND 15HH PLANERS

- Powerful 3HP TEFC motor controlled with a magnetic switch for safety
- Three V-belts transfer maximum power to the cutterhead



15HH

The Byrd® helical cutterhead with 98 four-sided knife inserts provides smoother, quieter cutting and finer finish than conventional systems

FREE!



POWERMATIC SIGN

WITH PURCHASE OF A 15S PLANER

A \$60 VALUE

FREE!



POWERMATIC SIGN AND A DRO

WITH PURCHASE OF A 15HH PLANER

A \$260 VALUE

1791210

\$1,999⁹⁹

YOU SAVE \$392⁰¹

STOCK NO.	DESCRIPTION	PROMO ITEMS	LIST PRICE	SALE PRICE	YOU SAVE!
1791210	15S Planer, 3HP 1PH 230V	Powermatic Sign (900768)	\$2,392.00	\$1,999.99	\$392.01
1791213	15HH Planer, 3HP 1PH 230V, helical head	Powermatic Sign (900768), DRO (708520)	\$3,020.00	\$2,499.99	\$520.01



209 AND 209HH PLANERS

- 5HP motor and 20" planing capacity for heavy duty work
- Fully enclosed base cabinet with integrated casters for shop mobility



209HH

The Byrd® helical cutterhead with 132 four-sided knife inserts provides smoother, quieter cutting and finer finish than conventional systems

FREE!



POWERMATIC SIGN AND A DRO

A \$260 VALUE

1791296

\$2,399⁹⁹

YOU SAVE \$335⁰¹

STOCK NO.	DESCRIPTION	PROMO ITEMS	LIST PRICE	SALE PRICE	YOU SAVE!
1791296	209 Planer, 5HP 1PH 230V	Powermatic Sign (900768), DRO (708520)	\$2,735.00	\$2,399.99	\$335.01
1791297	209 Planer, 5HP 3PH 230V	Powermatic Sign (900768), DRO (708520)	\$2,735.00	\$2,399.99	\$335.01
1791315	209HH Planer, 5HP 1PH 230V, helical head	Powermatic Sign (900768), DRO (708520)	\$4,317.00	\$3,499.99	\$817.01
1791316	209HH Planer, 5HP 3PH 230V, helical head	Powermatic Sign (900768), DRO (708520)	\$4,456.00	\$3,499.99	\$956.01



PM701 BENCHTOP DELUXE MORTISER

- In-line depth stop allows stopping at pre-set depths without racking the bit to the base
- Heavy-duty reversible handle can be installed to either side of the head without tools
- Stock hold-down with a double lock system, top and side, to eliminate slippage of workpiece

FREE!



CHISEL SET

A \$150 VALUE

1791310

\$499⁹⁹

YOU SAVE \$49⁰¹

STOCK NO.	DESCRIPTION	PROMO ITEMS	LIST PRICE	SALE PRICE	YOU SAVE!
1791310	PM701 Benchtop Deluxe Mortiser	Chisel Set (1791096)	\$549.00	\$499.99	\$49.01

1791264K

\$1,199⁹⁹

YOU SAVE \$90⁰¹

719T TILT TABLE MORTISER WITH STAND

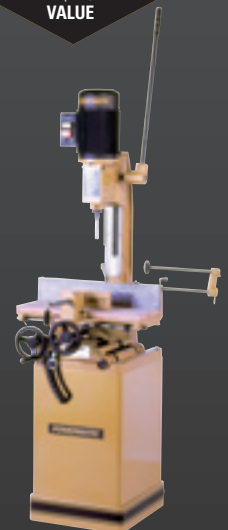
- Sturdy cast iron construction with precision-machined column and table
- Quick position table mounted swiveling vise clamp accommodates angled workpieces
- Feed lever features size positions allowing for quick adjustments
- Table and fence tilt from 0 to 35° for angled mortises
- Gas cylinder controlled rack and pinion system for smooth head raising and lowering

FREE!



POWERMATIC SIGN AND A CHISEL SET

A \$210 VALUE



STOCK NO.	DESCRIPTION	PROMO ITEMS	LIST PRICE	SALE PRICE	YOU SAVE!
1791264K	719T Tilt Table Mortiser with Stand	Powermatic Sign (900768), Chisel Set (1791096)	\$1,290.00	\$1,199.99	\$90.01



FREE!



POWERMATIC SIGN AND MOLDING GUIDE SYSTEM

A \$398 VALUE

PM15 PLANER/MOLDER

- 5 HP, 1Ph, 230V
- Fully enclosed cabinet with integral casters
- Large 27-1/2" x 15-1/8" cast iron table is supported by 4 lead screws and height is controlled by chain and sprocket

1120003

\$2,399⁹⁹

YOU SAVE \$210⁰¹

STOCK NO.	DESCRIPTION	PROMO ITEMS	LIST PRICE	SALE PRICE	YOU SAVE!
1120003	PM15 Planer Molder, 5HP 1PH 230V	Powermatic Sign (900768), Molding Guide System (2253082)	\$2,610.00	\$2,399.99	\$210.01



FREE!



POWERMATIC SIGN

+ADD A \$100 REBATE

WHEN YOU COMBINE A PM2700 SHAPER WITH A POWERMATIC POWER FEEDER FROM PAGE 6.

PM2700 SHAPERS

- Heavy cast iron base
- Integrated caster system built into the shaper base
- Spindle height digital readout



ONLINE DEMO

@POWERMATIC.COM

1280100C

\$2,999⁹⁹

YOU SAVE \$604⁰¹

STOCK NO.	DESCRIPTION	PROMO ITEMS	LIST PRICE	SALE PRICE	YOU SAVE!
1280100C	PM2700 Shaper, 3HP, 1Ph, 230V	Powermatic Sign (900768)	\$3,604.00	\$2,999.99	\$604.01
1280101C	PM2700 Shaper, 5HP, 1Ph, 230V	Powermatic Sign (900768)	\$3,781.00	\$3,199.99	\$581.01
1280102C	PM2700 Shaper, 5HP, 3Ph, 230/460V (Prewired 230V)	Powermatic Sign (900768)	\$3,781.00	\$3,199.99	\$581.01

FREE!



POWERMATIC SIGN, MOBILE BASE AND -RISER BLOCK

A \$422 VALUE



PWBS 14" BANDSAW

- Chip blower ensures a clean, visible cut line
- Durable micro-adjustable dual bearing blade guide system above and below the table for close blade control with less friction
- Exclusive design, quick-release precision T-square style rip fence with 4" resaw attachment
- Precision balanced, nine spoke cast iron wheels reduce vibration

1791216K

\$1,199⁹⁹

YOU SAVE \$278⁰¹

STOCK NO.	DESCRIPTION	PROMO ITEMS	LIST PRICE	SALE PRICE	YOU SAVE!
1791216K	PWBS-14CS, 14" Woodworking Bandsaw w/ stand	Powermatic Sign (900768), Riser Block (1791217), Mobile Base (2042377)	\$1,478.00	\$1,199.99	\$278.01



FREE!



POWERMATIC SIGN AND A \$100 MAIL IN REBATE

A \$160 VALUE

25" DUAL DRUM SANDER

- 5HP, 1Ph, 230V
- Independently adjustable rear drum
- Hard durometer rubber coating on steel drums
- Two-speed gearbox

1791290

\$3,499⁹⁹

YOU SAVE \$564⁰¹

STOCK NO.	DESCRIPTION	PROMO ITEMS	LIST PRICE	SALE PRICE	YOU SAVE!
1791290	DDS-225, 25" Dual Drum Sander, 5HP, 1Ph, 230V	Powermatic Sign (900768)	\$4,064.00	\$3,499.99	\$564.01



FREE!

POWERMATIC SIGN AND A \$50 MAIL IN REBATE
A \$110 VALUE

60C AND 60HH JOINTERS

- Extra long tables are mounted on dovetailed ways, for extended workpiece support
- Adjustment lever offers quick infeed table positioning and fine-tuning of cut depth
- High mount switch for operator convenience

1610084K
\$1,699⁹⁹
YOU SAVE \$357⁰¹

STOCK NO.	DESCRIPTION	PROMO ITEMS	LIST PRICE	SALE PRICE	YOU SAVE!
1610084K	60C JOINTER, 2HP 1PH 230V	Powermatic Sign (900768)	\$2,057.00	\$1,699.99	\$357.01
1610085K	60C, JOINTER, 3HP 3PH 230/460V	Powermatic Sign (900768)	\$2,057.00	\$1,699.99	\$357.01
1610086K	60HH JOINTER, 2HP 1PH 230V	Powermatic Sign (900768)	\$2,743.00	\$2,299.99	\$443.01
1610087K	60HH JOINTER, 3HP 3PH 230/460V	Powermatic Sign (900768)	\$2,743.00	\$2,299.99	\$443.01



FREE!

MOBILE BASE
A \$235 VALUE

54A AND 54HH 6" DELUXE JOINTERS

- with Helical head or Quick Auto-Set Knives (see chart for details)
- 1HP, 1Ph, 115/230V (Prewired 115V)
- Fine adjust lever for infeed table height

1791279DXK
\$959⁹⁹
YOU SAVE \$223⁰¹



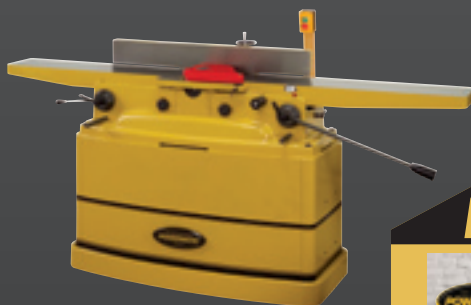
54HH
The helical cutterhead with 40 four-sided knife inserts provides smoother, quieter cutting and finer finish than conventional systems

STOCK NO.	DESCRIPTION	PROMO ITEMS	LIST PRICE	SALE PRICE	YOU SAVE!
1791279DXK	Model 54A, 6" Joints, 1HP, 1Ph, 115/230V w/QS Knives	Mobile Base (2042374)	\$1,183.00	\$959.99	\$223.01
1791317K	Model 54HH, 6" Joints, 1HP, 1Ph, 115/230V w/Helical Head	Mobile Base (2042374)	\$1,722.00	\$1,399.99	\$322.01

1610079
\$2,099⁹⁹
YOU SAVE \$299⁰¹



PJ-882HH
The helical cutterhead with 98 four-sided knife inserts provides smoother, quieter cutting and finer finish than conventional systems



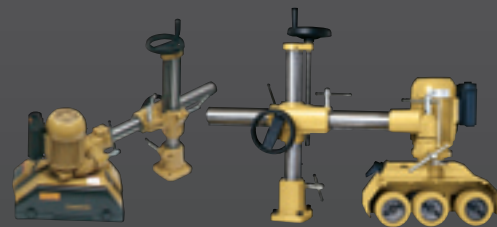
FREE!

POWERMATIC SIGN AND A \$50 MAIL IN REBATE
A \$110 VALUE

PJ882, 8" PARALLELOGRAM JOINTERS

- 2HP, 1Ph or 3HP, 3PH motors
- Large 8" x 82" table surface
- 1/8" depth of cut limiter control knob

STOCK NO.	DESCRIPTION	PROMO ITEMS	LIST PRICE	SALE PRICE	YOU SAVE!
1610079	PJ-882 8" Parallelogram Joints, 2HP, 1Ph	Powermatic Sign (900768)	\$2,399.00	\$2,099.99	\$299.01
1610080	PJ-882 8" Parallelogram Joints, 3HP, 3Ph	Powermatic Sign (900768)	\$2,399.00	\$2,099.99	\$299.01
1610082	PJ-882HH, 8" Parallelogram Joints, 2HP 1Ph 230V	Powermatic Sign (900768)	\$2,842.00	\$2,599.99	\$242.01
1610083	PJ-882HH, 8" Parallelogram Joints, 3HP 3Ph 230/460V (Prewired 230V)	Powermatic Sign (900768)	\$2,842.00	\$2,599.99	\$242.01



POWERFEEDERS

These rugged, heavy-duty stock feeders feature continuous-duty motors that transfer power from the gear box to the feed roller through the roller chain and sprockets, providing superior positive feeding for all types of materials. The fully adjustable support columns feature moveable universal joints and heavy locking mechanisms that lock the feeder in horizontal, vertical, or angle feed positions. Solid cast iron construction of bodies, bases and universal joints provide stability with vibration-free feeding.

FREE!

\$50 MAIL IN REBATE
REBATE DOUBLED
IF PURCHASED WITH A PM2700 SHAPER. SEE PAGE 5 FOR MORE INFORMATION

1790800K
\$969⁹⁹
YOU SAVE \$211⁰¹

STOCK NO.	DESCRIPTION	PROMO ITEMS	LIST PRICE	SALE PRICE	YOU SAVE!
1790800K	PF-33, Power Feeder, 1HP, 3Ph, 230V, 4 SPD	Rebate doubled if purchased with PM2700	\$1,181.00	\$969.99	\$211.01
1790807K	PF-31, Power Feeder, 1HP, 1Ph, 115V, 4 SPD	Rebate doubled if purchased with PM2700	\$1,283.00	\$1,099.99	\$183.01
1790810K	PF-33, Power Feeder, 1HP, 3Ph, 460V, 4 SPD	Rebate doubled if purchased with PM2700	\$1,174.00	\$969.99	\$204.01
1790811K	PF-43 Power Feeder, 1HP, 3Ph, 230V, 4 SPD	Rebate doubled if purchased with PM2700	\$1,310.00	\$1,099.99	\$210.01
1790812K	PF-41 Power Feeder, 1HP, 1Ph, 115V, 4 SPD	Rebate doubled if purchased with PM2700	\$1,450.00	\$1,199.99	\$250.01

FREE!



**POWERMATIC SIGN
AND A \$50
MAIL IN REBATE**

A \$110 VALUE



**PM2800, 18"
VARIABLE SPEED
DRILL PRESS**

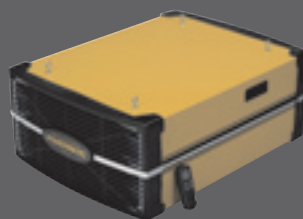
- Powered by a heavy duty 1HP, 1Ph, 115/230V TEFC motor for the big jobs
- Head mounted dual laser guide system provides a consistent drilling cross point on workpiece
- A new, larger table system with dual extensions for the largest woodworking table on the market; features twin T-slot grooves for a miter gauge or other homemade jigs

1792800

\$949⁹⁹

YOU SAVE \$202⁰¹

STOCK NO.	DESCRIPTION	PROMO ITEMS	LIST PRICE	SALE PRICE	YOU SAVE!
1792800	PM2800 Drill Press	Powermatic Sign (900768)	\$1,152.00	\$949.99	\$202.01



**PM1200 AIR
FILTRATION
SYSTEM**

- System has two filters, plus a diffuser to disperse exhausted air
- Remote control operates on radio frequency for wider range of effectiveness
- Timer has nine settings, for up to nine hours of continuous operation

FREE!



**POWERMATIC
SIGN**

A \$60 VALUE

1791330

\$469⁹⁹

YOU SAVE \$91⁰¹

STOCK NO.	DESCRIPTION	PROMO ITEMS	LIST PRICE	SALE PRICE	YOU SAVE!
1791330	PM1200 Air Filtration System	Powermatic Sign (900768)	\$561.00	\$469.99	\$91.01



**PM1900 DUST
COLLECTOR**

- Triple 4" dust ports
- All-metal duct construction for rigidity and improved air flow
- 3HP motor and large impeller for peak performance

FREE!

**POWERMATIC
SIGN AND A \$50
MAIL IN REBATE
WITH PURCHASE OF 1791075BK**

A \$110 VALUE

FREE!

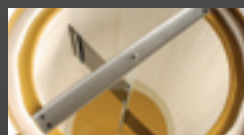
**POWERMATIC
SIGN AND 2 SETS
OF PLASTIC
COLLECTION BAGS
WITH PURCHASE OF 1791075CK OR
1791076CK**

A \$104 VALUE

FREE!

**POWERMATIC
SIGN AND A \$100
MAIL IN REBATE
WITH PURCHASE OF 1791076BK**

A \$160 VALUE



CANISTER FILTER

Pleated interior has over six times the filtering surface area of standard bags

1791077BK

\$999⁹⁹

YOU SAVE \$197⁰¹

STOCK NO.	DESCRIPTION	PROMO ITEMS	LIST PRICE	SALE PRICE	YOU SAVE!
1791075BK	PM1900, DC, 3HP, 1Ph, 230V, w/ Bag Filter Kit	Powermatic Sign (900768)	\$1,197.00	\$999.99	\$197.01
1791075CK	PM1900, DC, 3HP, 1Ph, 230V, w/ Canister Kit	Powermatic Sign (900768), Set of Plastic Collection Bags (1791087)	\$1,609.00	\$1,399.99	\$209.01
1791076BK	PM1900, DC, 3HP, 3Ph, 230/460V (Prewired 230V) w/ Bag Filter Kit	Powermatic Sign (900768)	\$1,173.00	\$999.99	\$173.01
1791076CK	PM1900, DC, 3HP, 3Ph, 230/460V (Prewired 230V) w/ Canister Kit	Powermatic Sign (900768), Set of Plastic Collection Bags (1791087)	\$1,605.00	\$1,399.99	\$205.01



**PM1300
DUST COLLECTOR**

- Remote controlled digital timer can be programmed for up to 99 minutes
- All-metal duct construction for rigidity and improved air flow
- Dual 4" dust ports
- Collection bags use snap ring for easy install
- Available with cloth bag filter or canister filter



FREE!

**POWERMATIC
SIGN AND A \$25
MAIL IN REBATE
WITH PURCHASE OF 1791077BK**

A \$85 VALUE

FREE!

**POWERMATIC
SIGN AND 2 SETS
OF PLASTIC
COLLECTION BAGS
WITH PURCHASE OF 1791077CK**

A \$104 VALUE

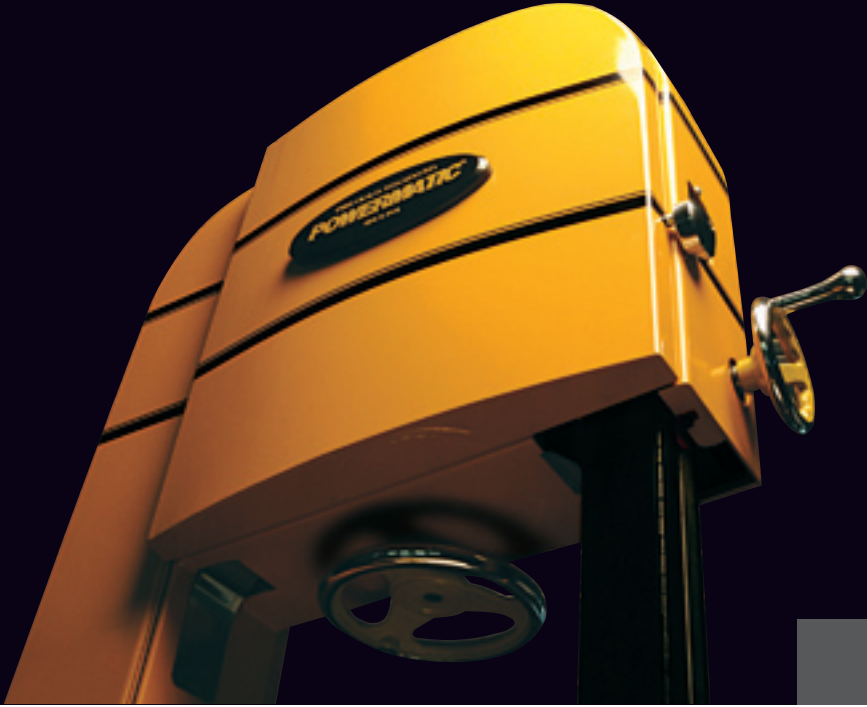
1791077BK

\$549⁹⁹

YOU SAVE \$118⁰¹

STOCK NO.	DESCRIPTION	PROMO ITEMS	LIST PRICE	SALE PRICE	YOU SAVE!
1791077BK	PM1300, DC, 1.75HP 1 Ph, 115/230V (Prewired 115V) w/ Bag Filter	Powermatic Sign (900768)	\$668.00	\$549.99	\$118.01
1791077CK	PM1300, DC, 1.75HP 1 Ph, 115/230V (Prewired 115V) w/ Canister	Powermatic Sign (900768), Set of Plastic Collection Bags (1791087)	\$876.00	\$739.99	\$136.01

WHEN YOUR PASSION TURNS TO PERFECTION



TURN TO POWERMATIC®

The PM1800 bandsaw sets a new standard for perfection with an array of innovative features including:

- Tension lever has full tension, partial tension, and blade release settings
- Micro-adjustable, tool-less bearing guide system
- Heavy duty T-style rip fence
- Large 24" x 24" cast iron table

To learn more about these features, visit your local Powermatic® dealer or:

www.powermatic.com/PM1800



MODEL
PM1800

The Gold Standard Since 1921™



OFFER AVAILABLE AT PARTICIPATING DEALERS ONLY WHILE SUPPLIES LAST. WMH TOOL GROUP RESERVES THE RIGHT TO CORRECT ANY PRICING, PRODUCT SPECIFICATIONS OR IMAGE DISCREPANCIES.
©2008 WMH Tool Group, Inc. All Rights Reserved. Printed in the U.S.A. The color GOLD is a registered trademark of WMH Tool Group, Inc.

Stock No. 901293
165M 1/09

WMH TOOL GROUP, INC.
Elgin, IL 60124
wmhtoolgroup.com